



RT3

3G connectivity.
Tough.
Reliable.



Aspera RT3

3G Connectivity. Tough. Reliable.

ASPERA RT3 provides a 3G mobile tablet solution for use in tough environments. The operating system is Android 4.1 Jelly Bean and is capable of running business apps designed for Android. Insert a 3G sim card for data connectivity, or to make calls and send text messages direct from the tablet interface. You can even share your 3G connection by turning on wifi hotspot capability. Alternatively you can connect via wifi when in range of a wireless network.

IP67 waterproof & dustproof certification, toughened glass and rubber enhanced outer body for shock absorption means RT3 will stand up to tough treatment. Complete with an adjustable holding strap and 7200mAh battery, RT3 will keep on performing where many other tablets simply cannot go the distance.



Features



7" TFT display 1200 x 800 pixels



IP67 water/dust resistant



Android 4.1



1.2Ghz Quad core processor



Wifi 802.11 b/g/n



5MP rear camera auto focus



Micro SD to 32GB



GPS



Bluetooth 2.1



7200mAh battery



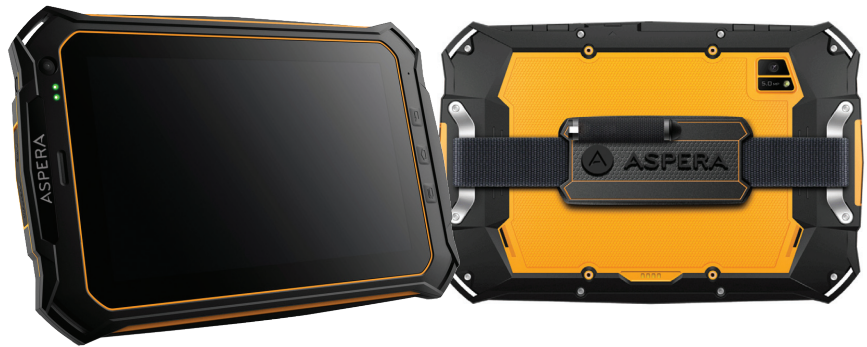
2 0.5W speakers



G-Sensor



Aspera RT3



Tech Specs

IP Certification

- IP67
- Submersible in water to 1m for 30 minutes
- Totally dust resistant

Construction

- Sealed battery
- Rubberised outer body and corners for shock absorption
- Toughened, scratch resistant glass
- Sealed charging port, headphone jack, Sim slot and MicroSD slot

Performance

- Android 4.1 OS
- Qualcomm Snapdragon 1.2Ghz Quad core processor
- 1GB RAM
- 8GB ROM
- MicroSD card to 32GB

Display

- 7" TFT display 1200 x 800 pixels. IPS
- Aspect ratio 16:9

Connectivity

- Wifi 802.11 b/g/n
- 3G WCDMA 850/2100Mhz
- Bluetooth V2.1
- GPS

Multimedia

- Rear camera 5MP auto focus
- Front camera 2MP
- Video recording
- Speakers 2 x 0.5W
- 3.5mm headphone jack

Dimensions

- 213x141x20mm
- Weight 590g

Battery

- 7200mAh
- Li-polymer
- Mini USB charge point

Other Features

- G-Sensor
- Light sensor